

Christmas Songs for Band Kids

Alto Saxophone

The following is a collection of traditional Christmas hymns and popular songs for band students to play for fun. The songs are in no particular order. The songs are transposed for each instrument so that you can play together with your friends. Have fun!

Jingle Bells

Musical notation for the first two staves of "Jingle Bells". The key signature is one sharp (F#) and the time signature is 4/4. The melody consists of eighth and quarter notes.

Up On The Housetop

Musical notation for the first two staves of "Up On The Housetop". The key signature is one sharp (F#) and the time signature is 4/4. The melody features eighth and quarter notes.

Jolly Old St. Nicholas

Musical notation for the first two staves of "Jolly Old St. Nicholas". The key signature is one sharp (F#) and the time signature is 4/4. The melody is characterized by eighth-note patterns.

We Wish You A Merry Christmas

Musical notation for the song 'We Wish You A Merry Christmas'. It consists of two staves of music in 3/4 time. The first staff begins with a treble clef, a key signature of one sharp (F#), and a 3/4 time signature. The melody starts with a quarter rest, followed by a quarter note G4, a quarter note A4, a quarter note B4, a quarter note C5, a quarter note B4, a quarter note A4, a quarter note G4, a quarter note F#4, a quarter note E4, a quarter note D4, a quarter note C4, a quarter note B3, a quarter note A3, and a quarter note G3. The second staff continues the melody with a quarter note F#3, a quarter note E3, a quarter note D3, a quarter note C3, a quarter note B2, a quarter note A2, a quarter note G2, and a final half note G2.

Deck The Hall

Musical notation for the song 'Deck The Hall'. It consists of three staves of music in 4/4 time. The first staff begins with a treble clef, a key signature of one sharp (F#), and a 4/4 time signature. The melody starts with a quarter note G4, a quarter note A4, a quarter note B4, a quarter note C5, a quarter note B4, a quarter note A4, a quarter note G4, a quarter note F#4, a quarter note E4, a quarter note D4, a quarter note C4, a quarter note B3, a quarter note A3, a quarter note G3, a quarter note F#3, a quarter note E3, a quarter note D3, a quarter note C3, a quarter note B2, a quarter note A2, a quarter note G2, and a final half note G2. The second staff continues the melody with a quarter note F#3, a quarter note E3, a quarter note D3, a quarter note C3, a quarter note B2, a quarter note A2, a quarter note G2, a quarter note F#2, a quarter note E2, a quarter note D2, a quarter note C2, a quarter note B1, a quarter note A1, a quarter note G1, a quarter note F#1, a quarter note E1, a quarter note D1, a quarter note C1, a quarter note B0, a quarter note A0, a quarter note G0, and a final half note G0. The third staff continues the melody with a quarter note F#1, a quarter note E1, a quarter note D1, a quarter note C1, a quarter note B0, a quarter note A0, a quarter note G0, a quarter note F#0, a quarter note E0, a quarter note D0, a quarter note C0, a quarter note B-1, a quarter note A-1, a quarter note G-1, a quarter note F#-1, a quarter note E-1, a quarter note D-1, a quarter note C-1, a quarter note B-2, a quarter note A-2, a quarter note G-2, and a final half note G-2.

The First Nowell

Musical notation for the song 'The First Nowell'. It consists of three staves of music in 3/4 time. The first staff begins with a treble clef, a key signature of one sharp (F#), and a 3/4 time signature. The melody starts with a quarter note G4, a quarter note A4, a quarter note B4, a quarter note C5, a quarter note B4, a quarter note A4, a quarter note G4, a quarter note F#4, a quarter note E4, a quarter note D4, a quarter note C4, a quarter note B3, a quarter note A3, a quarter note G3, a quarter note F#3, a quarter note E3, a quarter note D3, a quarter note C3, a quarter note B2, a quarter note A2, a quarter note G2, and a final half note G2. The second staff continues the melody with a quarter note F#3, a quarter note E3, a quarter note D3, a quarter note C3, a quarter note B2, a quarter note A2, a quarter note G2, a quarter note F#2, a quarter note E2, a quarter note D2, a quarter note C2, a quarter note B1, a quarter note A1, a quarter note G1, a quarter note F#1, a quarter note E1, a quarter note D1, a quarter note C1, a quarter note B0, a quarter note A0, a quarter note G0, and a final half note G0. The third staff continues the melody with a quarter note F#1, a quarter note E1, a quarter note D1, a quarter note C1, a quarter note B0, a quarter note A0, a quarter note G0, a quarter note F#0, a quarter note E0, a quarter note D0, a quarter note C0, a quarter note B-1, a quarter note A-1, a quarter note G-1, a quarter note F#-1, a quarter note E-1, a quarter note D-1, a quarter note C-1, a quarter note B-2, a quarter note A-2, a quarter note G-2, and a final half note G-2.

Go Tell It On The Mountain

verse

Musical notation for the verse of 'Go Tell It On The Mountain'. It consists of two staves in 4/4 time. The first staff begins with a treble clef and a 4/4 time signature. The melody starts with a half note G4, followed by quarter notes A4, B4, C5, B4, A4, G4. The second staff continues with quarter notes F4, E4, D4, C4, B3, A3, G3, F3, ending with a double bar line.

chorus

Musical notation for the chorus of 'Go Tell It On The Mountain'. It consists of two staves in 4/4 time. The first staff begins with a treble clef. The melody starts with quarter notes G4, A4, B4, C5, B4, A4, G4, F4, E4, D4, C4, B3, A3, G3, F3. The second staff continues with quarter notes E3, D3, C3, B2, A2, G2, F2, E2, D2, C2, B1, A1, G1, F1, ending with a double bar line.

God Rest Ye Merry, Gentlemen

Musical notation for 'God Rest Ye Merry, Gentlemen'. It consists of five staves in 4/4 time. The first staff begins with a treble clef and a 4/4 time signature. The melody starts with a whole rest, followed by quarter notes G4, A4, B4, C5, B4, A4, G4, F4, E4, D4, C4, B3, A3, G3, F3. The second staff continues with quarter notes E3, D3, C3, B2, A2, G2, F2, E2, D2, C2, B1, A1, G1, F1. The third staff continues with quarter notes E1, D1, C1, B0, A0, G0, F0, E0, D0, C0, B-1, A-1, G-1, F-1. The fourth staff continues with quarter notes E-1, D-1, C-1, B-2, A-2, G-2, F-2, E-2, D-2, C-2, B-3, A-3, G-3, F-3. The fifth staff continues with quarter notes E-3, D-3, C-3, B-4, A-4, G-4, F-4, E-4, D-4, C-4, B-5, A-5, G-5, F-5, ending with a double bar line.

Hark The Herlad Angels Sing

Musical score for "Hark The Herlad Angels Sing" in 4/4 time. The score consists of five staves of music. The first staff begins with a treble clef and a 4/4 time signature. The melody is written in a simple, diatonic style, primarily using quarter and eighth notes. The piece concludes with a double bar line at the end of the fifth staff.

Away In A Manger

Musical score for "Away In A Manger" in 3/4 time. The score consists of four staves of music. The first staff begins with a treble clef and a 3/4 time signature. The melody is written in a simple, diatonic style, primarily using quarter and eighth notes. The piece concludes with a double bar line at the end of the fourth staff.

O Little Town Of Bethlehem

Musical score for 'O Little Town Of Bethlehem' in 4/4 time, G major. The score consists of four staves of music. The first staff begins with a whole rest followed by a quarter rest, then a series of quarter notes: G4, A4, B4, C5, B4, A4, G4, F4, E4, D4, C4. The second staff continues with quarter notes: B3, A3, G3, F3, E3, D3, C3, B2, A2, G2, F2, E2, D2, C2. The third staff continues with quarter notes: B1, A1, G1, F1, E1, D1, C1, B0, A0, G0, F0, E0, D0, C0. The fourth staff concludes with quarter notes: B0, A0, G0, F0, E0, D0, C0, B0, A0, G0, F0, E0, D0, C0, ending with a double bar line.

Joy To The World

Musical score for 'Joy To The World' in 4/4 time, G major. The score consists of three staves of music. The first staff begins with a treble clef, a key signature of one sharp (F#), and a 4/4 time signature, followed by quarter notes: G4, A4, B4, C5, B4, A4, G4, F4, E4, D4, C4. The second staff continues with quarter notes: B3, A3, G3, F3, E3, D3, C3, B2, A2, G2, F2, E2, D2, C2. The third staff continues with quarter notes: B1, A1, G1, F1, E1, D1, C1, B0, A0, G0, F0, E0, D0, C0, ending with a double bar line.

O Come, O Come, Emmanuel

Musical notation for the hymn "O Come, O Come, Emmanuel". The score is written in treble clef with a 4/4 time signature. It consists of three staves of music. The first staff begins with a whole rest followed by a quarter rest, then a series of quarter notes: G4, A4, B4, C5, B4, A4, G4, F4, E4, D4, C4. The second staff continues with quarter notes: B3, A3, G3, F3, E3, D3, C3, B2, A2, G2, F2, E2, D2, C2. The third staff concludes with quarter notes: B1, A1, G1, F1, E1, D1, C1, B0, A0, G0, F0, E0, D0, C0, ending with a double bar line.

O Come All Ye Faithful

Musical notation for the hymn "O Come All Ye Faithful". The score is written in treble clef with a 4/4 time signature. It consists of three staves of music. The first staff begins with a whole rest followed by a quarter rest, then a series of quarter notes: G4, A4, B4, C5, B4, A4, G4, F4, E4, D4, C4. The second staff continues with quarter notes: B3, A3, G3, F3, E3, D3, C3, B2, A2, G2, F2, E2, D2, C2. The third staff concludes with quarter notes: B1, A1, G1, F1, E1, D1, C1, B0, A0, G0, F0, E0, D0, C0, ending with a double bar line.

Silent Night

Musical score for 'Silent Night' in G major and 3/4 time. The score consists of three staves of music. The first staff begins with a treble clef, a key signature of one sharp (F#), and a 3/4 time signature. The melody is written in a simple, lyrical style with dotted rhythms and rests. The second and third staves continue the melody, with the third staff ending with a double bar line.

What Child Is This

Musical score for 'What Child Is This' in G major and 3/4 time. The score consists of four staves of music. The first staff begins with a treble clef, a key signature of one sharp (F#), and a 3/4 time signature. The melody is written in a simple, lyrical style with dotted rhythms and rests. The second, third, and fourth staves continue the melody, with the fourth staff ending with a double bar line.

Angels We Have Heard On High

Musical notation for the song "Angels We Have Heard On High". It consists of three staves of music in 4/4 time. The first staff begins with a treble clef and a 4/4 time signature. The melody is written in a single line. The second and third staves continue the melody, featuring a long, sweeping slur that encompasses several measures of eighth and sixteenth notes. The piece concludes with a final whole note chord.

Have Yourself A Merry Little Christmas

Musical notation for the song "Have Yourself A Merry Little Christmas". It consists of five staves of music in 4/4 time, with a key signature of one sharp (F#). The first staff begins with a treble clef and a 4/4 time signature. The melody is written in a single line. The second and third staves continue the melody, featuring a long, sweeping slur that encompasses several measures of eighth and sixteenth notes. The fourth and fifth staves continue the melody, with the fifth staff ending with a double bar line and a repeat sign.

Rudolph The Red Nosed Reindeer

Musical score for 'Rudolph The Red Nosed Reindeer' in G major (one sharp) and 4/4 time. The score consists of four staves of music. The melody is written in treble clef. The first staff begins with a treble clef, a key signature of one sharp (F#), and a 4/4 time signature. The melody features eighth and sixteenth notes, with some beamed sixteenth notes. The second and third staves continue the melody with similar rhythmic patterns. The fourth staff concludes the piece with a double bar line.

Rockin Around The Christmas Tree

Musical score for 'Rockin Around The Christmas Tree' in G major (one sharp) and 4/4 time. The score consists of four staves of music. The melody is written in treble clef. The first staff begins with a treble clef, a key signature of one sharp (F#), and a 4/4 time signature. The melody is characterized by eighth notes and eighth-note pairs, with some beamed eighth notes. The second and third staves continue the melody. The fourth staff concludes the piece with a double bar line.

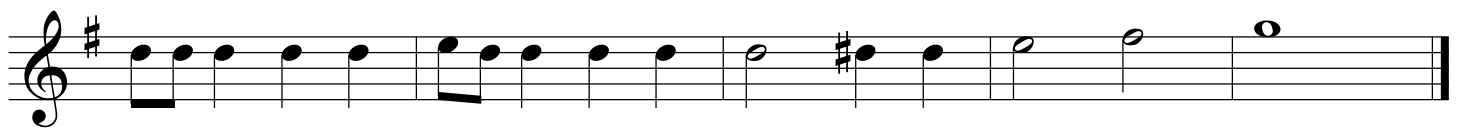
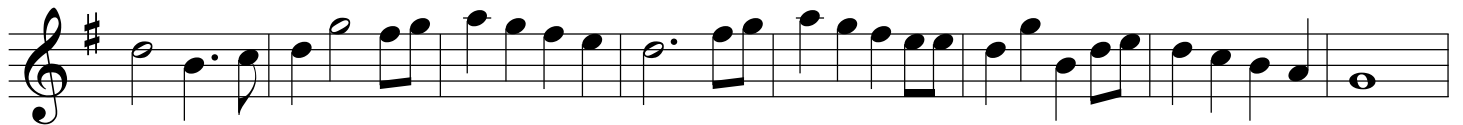
Santa Claus Is Coming To Town

Musical score for 'Santa Claus Is Coming To Town' in G major, 4/4 time. The score consists of four staves of music. The first staff begins with a treble clef, a key signature of one sharp (F#), and a 4/4 time signature. The melody is characterized by eighth and sixteenth notes, with a prominent dotted quarter note in the first measure. The second and third staves continue the melodic line with similar rhythmic patterns. The fourth staff concludes the piece with a final double bar line.

White Christmas

Musical score for 'White Christmas' in G major, 4/4 time. The score consists of four staves of music. The first staff begins with a treble clef, a key signature of one sharp (F#), and a 4/4 time signature. The melody features a mix of quarter and eighth notes, with a notable dotted quarter note in the second measure. The second and third staves continue the melodic line with similar rhythmic patterns. The fourth staff concludes the piece with a final double bar line.

Frosty The Snowman



Let It Snow

