

# Christmas Songs for Band Kids

## Tuba

The following is a collection of traditional Christmas hymns and popular songs for band students to play for fun. The songs are in no particular order. The songs are transposed for each instrument so that you can play together with your friends. Have fun!

### Jingle Bells

Two staves of musical notation for the song "Jingle Bells" in bass clef, 4/4 time, and B-flat major. The first staff contains the first eight measures, and the second staff contains the final four measures, ending with a double bar line.

### Up On The Housetop

Two staves of musical notation for the song "Up On The Housetop" in bass clef, 4/4 time, and B-flat major. The first staff contains the first eight measures, and the second staff contains the final four measures, ending with a double bar line.

### Jolly Old St. Nicholas

Two staves of musical notation for the song "Jolly Old St. Nicholas" in bass clef, 4/4 time, and B-flat major. The first staff contains the first eight measures, and the second staff contains the final four measures, ending with a double bar line.

We Wish You A Merry Christmas

Two staves of musical notation for the song 'We Wish You A Merry Christmas'. The first staff begins with a bass clef, a key signature of two flats (B-flat and E-flat), and a 3/4 time signature. It starts with two rests, followed by a series of eighth and quarter notes. The second staff continues the melody with similar rhythmic patterns, ending with a double bar line.

Deck The Hall

Three staves of musical notation for the song 'Deck The Hall'. The first staff begins with a bass clef, a key signature of two flats, and a 4/4 time signature. It starts with a repeat sign, followed by a series of quarter and eighth notes. The second and third staves continue the melody, with the third staff ending with a double bar line.

The First Nowell

Three staves of musical notation for the song 'The First Nowell'. The first staff begins with a bass clef, a key signature of two flats, and a 3/4 time signature. It starts with three eighth notes, followed by a series of quarter and eighth notes. The second and third staves continue the melody, with the third staff ending with a double bar line.

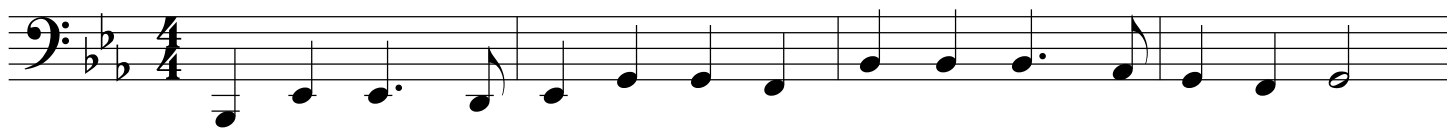
Go Tell It On The Mountain

*verse*

*chorus*

God Rest Ye Merry, Gentlemen

Hark The Herlad Angels Sing



O Little Town Of Bethlehem

Musical score for 'O Little Town Of Bethlehem' in bass clef, 4/4 time, B-flat major. The score consists of four staves. The first staff begins with a whole rest followed by a quarter rest, then a sequence of eighth and quarter notes. The second and third staves continue the melody with eighth and quarter notes. The fourth staff concludes the piece with a final quarter note and a whole note.

Joy To The World

Musical score for 'Joy To The World' in bass clef, 4/4 time, B-flat major. The score consists of three staves. The first staff starts with a quarter note followed by eighth and quarter notes. The second and third staves continue the melody with eighth and quarter notes, including some beamed eighth notes and a final quarter note.



Silent Night

Musical score for "Silent Night" in bass clef, 3/4 time signature. The score consists of three staves. The first staff begins with a treble clef and a 3/4 time signature, followed by a key signature of two flats (B-flat and E-flat). The melody is written in bass clef. The second and third staves continue the melody. The piece concludes with a double bar line.

What Child Is This

Musical score for "What Child Is This" in bass clef, 3/4 time signature. The score consists of four staves. The first staff begins with a treble clef and a 3/4 time signature, followed by a key signature of two flats (B-flat and E-flat). The melody is written in bass clef. The second, third, and fourth staves continue the melody. The piece concludes with a double bar line.

Angels We Have Heard On High

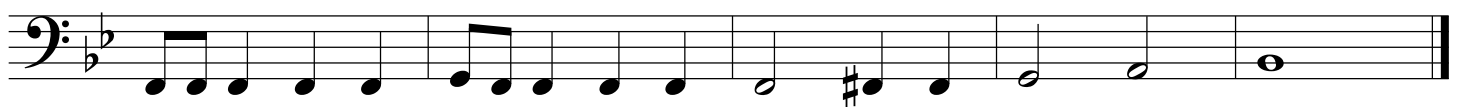








Frosty The Snowman



Let It Snow

