

# Christmas Songs for Band Kids

**Trombone**  
**Baritone**

The following is a collection of traditional Christmas hymns and popular songs for band students to play for fun. The songs are in no particular order. The songs are transposed for each instrument so that you can play together with your friends. Have fun!

## Jingle Bells

Two staves of musical notation for the song "Jingle Bells". The first staff begins with a bass clef, a key signature of one flat (B-flat), and a 4/4 time signature. The melody consists of eighth and quarter notes, ending with a double bar line. The second staff continues the melody, also ending with a double bar line.

## Up On The Housetop

Two staves of musical notation for the song "Up On The Housetop". The first staff begins with a bass clef, a key signature of one flat (B-flat), and a 4/4 time signature. The melody features eighth and quarter notes, ending with a double bar line. The second staff continues the melody, also ending with a double bar line.

## Jolly Old St. Nicholas

Two staves of musical notation for the song "Jolly Old St. Nicholas". The first staff begins with a bass clef, a key signature of one flat (B-flat), and a 4/4 time signature. The melody consists of eighth and quarter notes, ending with a double bar line. The second staff continues the melody, also ending with a double bar line.

We Wish You A Merry Christmas

Two staves of musical notation in bass clef, 3/4 time, and B-flat major. The first staff begins with two rests, followed by a sequence of eighth and quarter notes. The second staff continues the melody with eighth and quarter notes, ending with a whole note.

Deck The Hall

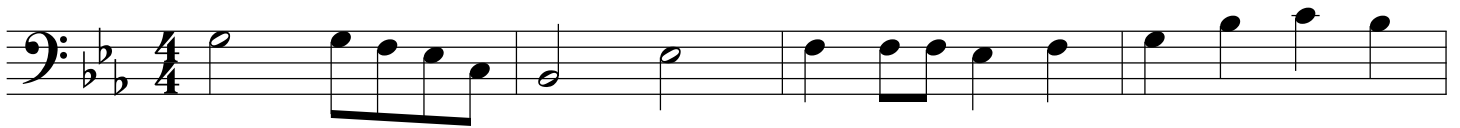
Three staves of musical notation in bass clef, 4/4 time, and B-flat major. The first staff starts with a repeat sign and contains a mix of quarter and eighth notes. The second and third staves continue the melody with various note values, including quarter, eighth, and sixteenth notes.

The First Nowell

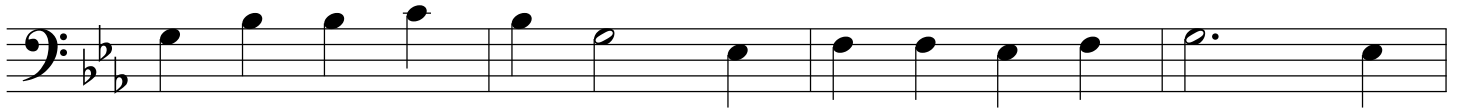
Three staves of musical notation in bass clef, 3/4 time, and B-flat major. The first staff begins with two rests, followed by a melody of quarter and eighth notes. The second and third staves continue the piece with similar rhythmic patterns.

Go Tell It On The Mountain

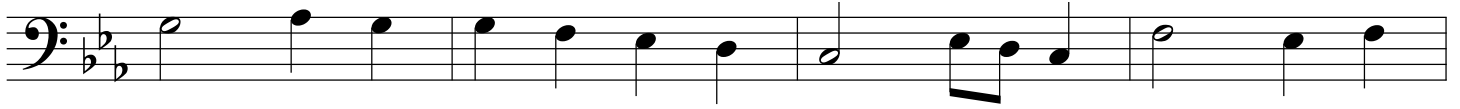
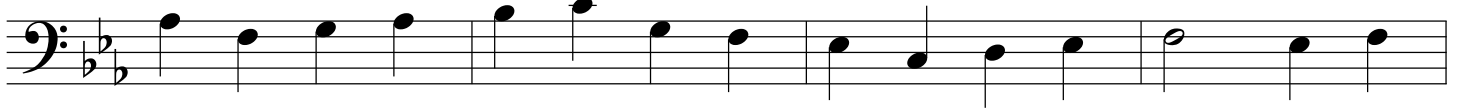
*verse*



*chorus*



God Rest Ye Merry, Gentlemen



Hark The Herlad Angels Sing

Musical score for 'Hark The Herlad Angels Sing' in bass clef, 4/4 time, and B-flat major. The score consists of five staves of music. The first staff begins with a treble clef and a 4/4 time signature. The melody is written in bass clef. The notes are: G2, A2, Bb2, G2, A2, Bb2, C3, D3, E3, F3, G3, A3, Bb3, A3, G3, F3, E3, D3, C3. The second staff continues the melody: G3, A3, Bb3, A3, G3, F3, E3, D3, C3, Bb2, A2, G2, F2, E2, D2, C2. The third staff continues: Bb2, A2, G2, F2, E2, D2, C2, Bb2, A2, G2, F2, E2, D2, C2, Bb2, A2, G2, F2, E2, D2, C2. The fourth staff continues: Bb2, A2, G2, F2, E2, D2, C2, Bb2, A2, G2, F2, E2, D2, C2, Bb2, A2, G2, F2, E2, D2, C2. The fifth staff concludes the piece with a double bar line: Bb2, A2, G2, F2, E2, D2, C2, Bb2, A2, G2, F2, E2, D2, C2.

Away In A Manger

Musical score for 'Away In A Manger' in bass clef, 3/4 time, and B-flat major. The score consists of four staves of music. The first staff begins with a treble clef and a 3/4 time signature. The melody is written in bass clef. The notes are: G2, A2, Bb2, G2, A2, Bb2, C3, D3, E3, F3, G3, A3, Bb3, A3, G3, F3, E3, D3, C3. The second staff continues the melody: G3, A3, Bb3, A3, G3, F3, E3, D3, C3, Bb2, A2, G2, F2, E2, D2, C2. The third staff continues: Bb2, A2, G2, F2, E2, D2, C2, Bb2, A2, G2, F2, E2, D2, C2, Bb2, A2, G2, F2, E2, D2, C2. The fourth staff concludes the piece with a double bar line: Bb2, A2, G2, F2, E2, D2, C2, Bb2, A2, G2, F2, E2, D2, C2.



O Come, O Come, Emmanuel

Musical score for "O Come, O Come, Emmanuel" in bass clef, 4/4 time, and B-flat major. The score consists of three staves. The first staff begins with a whole rest followed by a quarter rest, then a series of eighth and quarter notes. The second staff continues with eighth and quarter notes, including a dotted half note. The third staff concludes with a dotted half note and a final whole note.

O Come All Ye Faithful

Musical score for "O Come All Ye Faithful" in bass clef, 4/4 time, and B-flat major. The score consists of three staves. The first staff begins with a whole rest followed by a quarter rest, then a series of quarter and eighth notes. The second staff continues with eighth and quarter notes, including a dotted half note. The third staff concludes with a dotted half note and a final whole note.

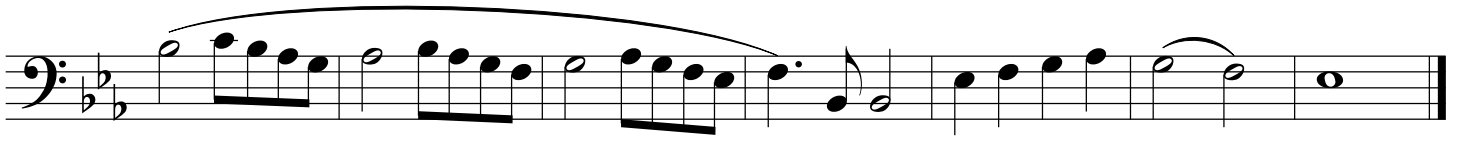
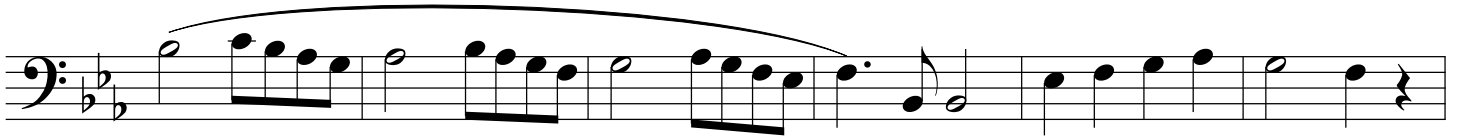
Silent Night

Musical score for "Silent Night" in bass clef, 3/4 time, and B-flat major. The score consists of three staves. The first staff begins with a treble clef and a 3/4 time signature. The melody is written in a simple, serene style, featuring quarter and eighth notes with rests. The second and third staves continue the melody, with the third staff ending with a double bar line.

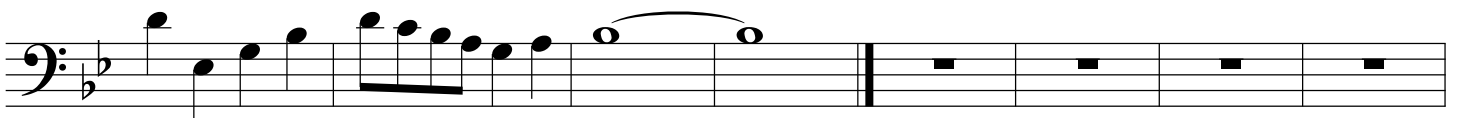
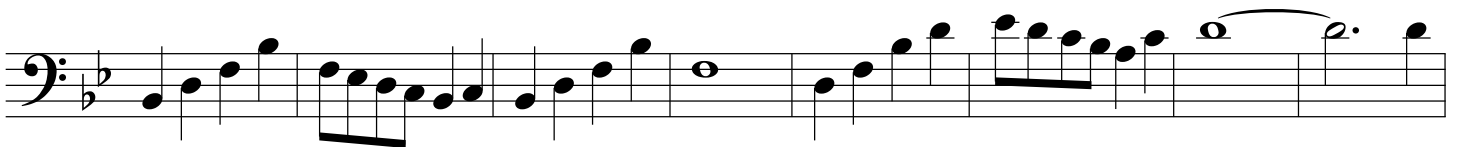
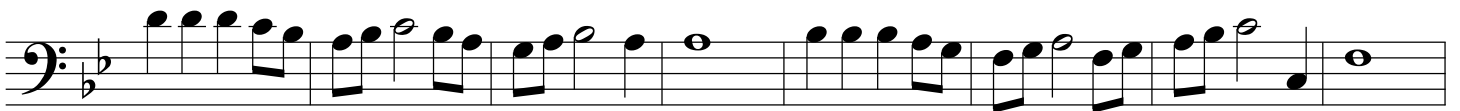
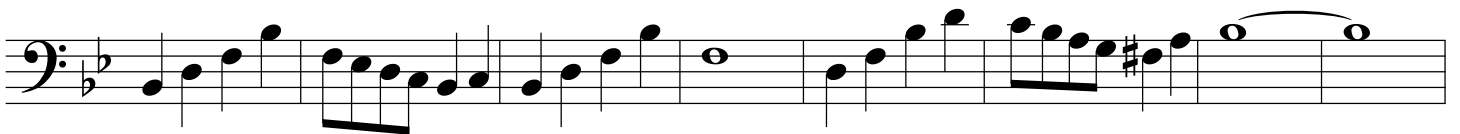
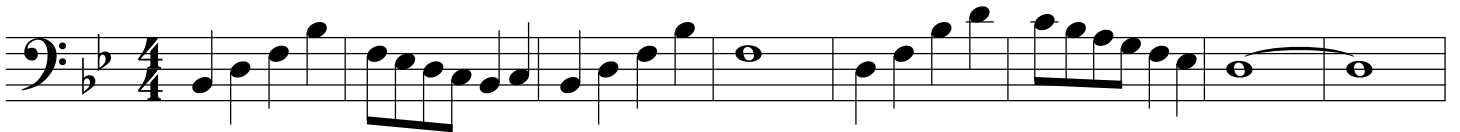
What Child Is This

Musical score for "What Child Is This" in bass clef, 3/4 time, and B-flat major. The score consists of four staves. The first staff begins with a treble clef and a 3/4 time signature. The melody is written in a simple, serene style, featuring quarter and eighth notes with rests. The second and third staves continue the melody, with the third staff ending with a double bar line.

Angels We Have Heard On High



Have Yourself A Merry Little Christmas







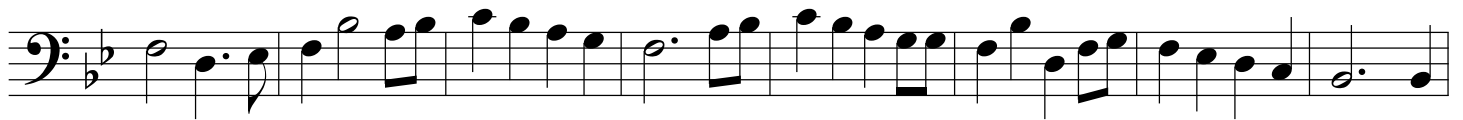
Santa Claus Is Coming To Town

The musical score for 'Santa Claus Is Coming To Town' is presented in four staves of bass clef notation. The key signature is one flat (B-flat major) and the time signature is 4/4. The melody begins with a quarter rest, followed by a series of eighth and quarter notes. The first staff contains the first 12 measures, the second staff the next 12 measures, the third staff the next 12 measures, and the fourth staff the final 12 measures, ending with a double bar line.

White Christmas

The musical score for 'White Christmas' is presented in four staves of bass clef notation. The key signature is one flat (B-flat major) and the time signature is 4/4. The melody starts with a whole note, followed by a series of quarter and eighth notes. The first staff contains the first 12 measures, the second staff the next 12 measures, the third staff the next 12 measures, and the fourth staff the final 12 measures, ending with a double bar line.

Frosty The Snowman



Let It Snow

