

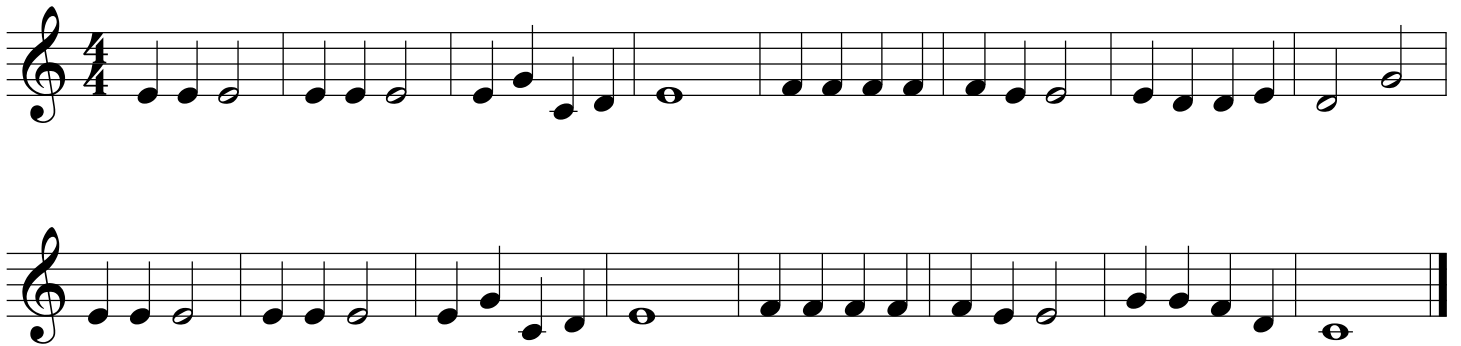
Christmas Songs for Band Kids

Trumpet

Clarinet

The following is a collection of traditional Christmas hymns and popular songs for band students to play for fun. The songs are in no particular order. The songs are transposed for each instrument so that you can play together with your friends. Have fun!

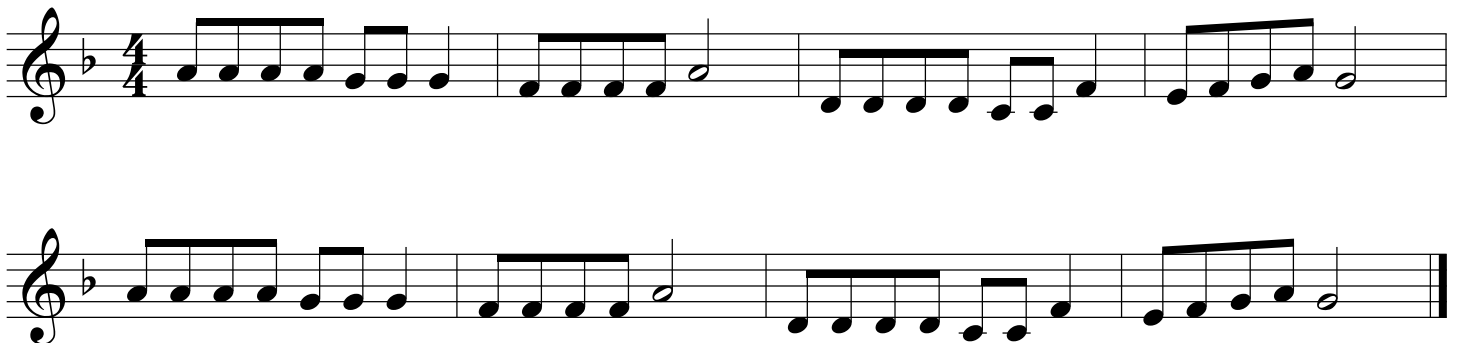
Jingle Bells



Up On The Housetop



Jolly Old St. Nicholas



We Wish You A Merry Christmas

Musical notation for the first two staves of 'We Wish You A Merry Christmas'. The first staff begins with a treble clef, a key signature of one flat (Bb), and a 3/4 time signature. It contains two measures of rests followed by a series of eighth and quarter notes. The second staff continues the melody with similar rhythmic patterns, ending with a double bar line.

Deck The Hall

Musical notation for the first three staves of 'Deck The Hall'. The first staff starts with a treble clef, a key signature of one flat (Bb), and a 4/4 time signature. It features a series of quarter and eighth notes, including a triplet of eighth notes. The second and third staves continue the melody with various rhythmic values, ending with double bar lines.

The First Nowell

Musical notation for the first three staves of 'The First Nowell'. The first staff begins with a treble clef, a key signature of one flat (Bb), and a 3/4 time signature. It starts with two measures of rests followed by a melody of eighth and quarter notes. The second and third staves continue the piece with similar rhythmic patterns, ending with double bar lines.

Go Tell It On The Mountain

verse

Musical notation for the verse of 'Go Tell It On The Mountain'. It consists of two staves of music in 4/4 time, key of B-flat major. The first staff begins with a treble clef, a key signature of one flat, and a 4/4 time signature. The melody starts on a half note G4, followed by a quarter note A4, a quarter note Bb4, and a quarter note C5. The second staff continues the melody with a quarter note Bb4, a quarter note A4, a quarter note G4, a quarter note F4, a quarter note E4, a quarter note D4, a quarter note C4, and a quarter note Bb3.

chorus

Musical notation for the chorus of 'Go Tell It On The Mountain'. It consists of two staves of music in 4/4 time, key of B-flat major. The first staff begins with a treble clef, a key signature of one flat, and a 4/4 time signature. The melody starts on a half note G4, followed by a quarter note A4, a quarter note Bb4, a quarter note C5, a quarter note Bb4, a quarter note A4, a quarter note G4, a quarter note F4, a quarter note E4, a quarter note D4, a quarter note C4, and a quarter note Bb3. The second staff continues the melody with a quarter note Bb3, a quarter note A3, a quarter note G3, a quarter note F3, a quarter note E3, a quarter note D3, a quarter note C3, and a quarter note Bb2.

God Rest Ye Merry, Gentlemen

Musical notation for 'God Rest Ye Merry, Gentlemen'. It consists of five staves of music in 4/4 time, key of B-flat major. The first staff begins with a treble clef, a key signature of one flat, and a 4/4 time signature. The melody starts with a whole rest, followed by a quarter note G4, a quarter note A4, a quarter note Bb4, a quarter note C5, a quarter note Bb4, a quarter note A4, a quarter note G4, a quarter note F4, a quarter note E4, a quarter note D4, a quarter note C4, and a quarter note Bb3. The second staff continues the melody with a quarter note Bb3, a quarter note A3, a quarter note G3, a quarter note F3, a quarter note E3, a quarter note D3, a quarter note C3, and a quarter note Bb2. The third staff continues the melody with a quarter note Bb2, a quarter note A2, a quarter note G2, a quarter note F2, a quarter note E2, a quarter note D2, a quarter note C2, and a quarter note Bb1. The fourth staff continues the melody with a quarter note Bb1, a quarter note A1, a quarter note G1, a quarter note F1, a quarter note E1, a quarter note D1, a quarter note C1, and a quarter note Bb0. The fifth staff continues the melody with a quarter note Bb0, a quarter note A0, a quarter note G0, a quarter note F0, a quarter note E0, a quarter note D0, a quarter note C0, and a quarter note Bb-1.

Hark The Herlad Angels Sing

Musical score for 'Hark The Herlad Angels Sing' in 4/4 time, key of B-flat major. The score consists of five staves of music. The first staff begins with a treble clef, a key signature of one flat (B-flat), and a 4/4 time signature. The melody is composed of quarter and eighth notes, with some dotted rhythms. The second staff continues the melody with similar rhythmic patterns. The third staff features a more active melodic line with eighth notes. The fourth and fifth staves conclude the piece with a final cadence, ending with a double bar line.

Away In A Manger

Musical score for 'Away In A Manger' in 3/4 time, key of B-flat major. The score consists of four staves of music. The first staff begins with a treble clef, a key signature of one flat (B-flat), and a 3/4 time signature. The melody starts with two rests followed by a dotted quarter note, then continues with a series of quarter notes. The second staff continues the melody with quarter notes. The third and fourth staves conclude the piece with a final cadence, ending with a double bar line.

O Little Town Of Bethlehem

Musical notation for the song "O Little Town Of Bethlehem". The score is written on four staves in 4/4 time with a key signature of one flat (B-flat). The melody begins with a whole rest, followed by a quarter rest, and then a series of quarter and eighth notes. The piece concludes with a double bar line.

Joy To The World

Musical notation for the song "Joy To The World". The score is written on three staves in 4/4 time with a key signature of one flat (B-flat). The melody is characterized by eighth and sixteenth notes, often beamed together. The piece concludes with a double bar line.

O Come, O Come, Emmanuel

Musical score for "O Come, O Come, Emmanuel" in 4/4 time, key of B-flat major. The score consists of three staves of music. The first staff begins with a whole rest followed by a quarter rest, then a series of eighth and quarter notes. The second staff continues with a sequence of eighth and quarter notes. The third staff concludes with a series of quarter and eighth notes, ending with a double bar line.

O Come All Ye Faithful

Musical score for "O Come All Ye Faithful" in 4/4 time, key of B-flat major. The score consists of three staves of music. The first staff begins with a whole rest followed by a quarter rest, then a series of quarter and eighth notes. The second staff continues with a sequence of eighth and quarter notes. The third staff concludes with a series of quarter and eighth notes, ending with a double bar line.

Silent Night

Musical notation for the song "Silent Night". It consists of three staves of music in 3/4 time. The first staff begins with a treble clef, a key signature of one flat (B-flat), and a 3/4 time signature. The melody starts on G4, moving to A4, Bb4, and C5. The second staff continues the melody with notes like D5, E5, F5, and G5. The third staff concludes the piece with a final note on G4 and a double bar line.

What Child Is This

Musical notation for the song "What Child Is This". It consists of four staves of music in 3/4 time. The first staff begins with a treble clef, a key signature of two flats (B-flat and E-flat), and a 3/4 time signature. The melody starts on G4, moving to A4, Bb4, and C5. The second staff continues the melody with notes like D5, E5, F5, and G5. The third and fourth staves conclude the piece with a final note on G4 and a double bar line.

Angels We Have Heard On High

Musical score for 'Angels We Have Heard On High' in G major, 4/4 time. The score consists of three staves. The first staff contains the first eight measures. The second and third staves contain the remaining eight measures, with a long slur spanning across both staves. The piece concludes with a double bar line.

Have Yourself A Merry Little Christmas

Musical score for 'Have Yourself A Merry Little Christmas' in G major, 4/4 time. The score consists of five staves. The first four staves contain the main melody, with a double bar line at the end of the fourth staff. The fifth staff contains a final melodic phrase followed by a double bar line and four measures of whole rests.

Rudolph The Red Nosed Reindeer



Musical notation for the song "Rudolph The Red Nosed Reindeer". It consists of four staves of music in 4/4 time. The first staff begins with a treble clef and a 4/4 time signature. The melody features eighth and sixteenth notes, with some beamed sixteenth notes. The second staff continues the melody with similar rhythmic patterns. The third staff shows a change in the melody, with more quarter and eighth notes. The fourth staff concludes the piece with a double bar line.

Rockin Around The Christmas Tree



Musical notation for the song "Rockin Around The Christmas Tree". It consists of four staves of music in 4/4 time. The first staff begins with a treble clef and a 4/4 time signature. The melody is characterized by eighth and sixteenth notes, with a prominent eighth-note triplet in the second measure. The second staff continues the melody, featuring a sharp sign (#) on the second line of the staff. The third staff shows a continuation of the rhythmic pattern. The fourth staff concludes the piece with a double bar line.

Santa Claus Is Coming To Town

Musical notation for the song 'Santa Claus Is Coming To Town'. It consists of four staves of music in 4/4 time. The first staff begins with a treble clef, a 4/4 time signature, and a key signature of one sharp (F#). The melody is written in a single line. The second and third staves continue the melody with various rhythmic patterns including eighth and sixteenth notes. The fourth staff concludes the piece with a double bar line.

White Christmas

Musical notation for the song 'White Christmas'. It consists of four staves of music in 4/4 time. The first staff begins with a treble clef and a key signature of one sharp (F#). The melody is written in a single line. The second and third staves continue the melody with various rhythmic patterns including eighth and sixteenth notes. The fourth staff concludes the piece with a double bar line.

Frosty The Snowman

The image displays a musical score for the song "Frosty The Snowman" in 4/4 time. The score is written on six staves, all using a treble clef. The first staff begins with a 4/4 time signature. The melody is composed of eighth and quarter notes, with some beamed eighth notes. The second staff continues the melody. The third staff features a more active melodic line with many eighth notes. The fourth staff continues the melody. The fifth staff shows a change in the melodic pattern, with more spaced-out notes. The sixth and final staff concludes the piece with a key signature change to one sharp (F#) and ends with a double bar line.

Let It Snow

